

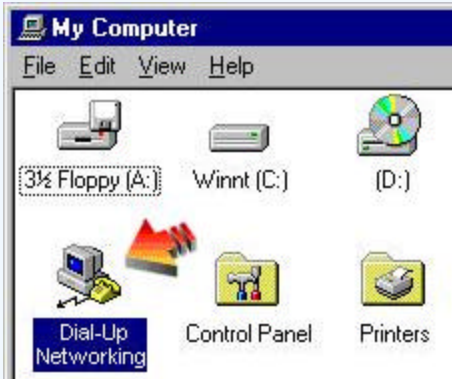
Windows NT

Step 1

Double click on **My Computer** icon

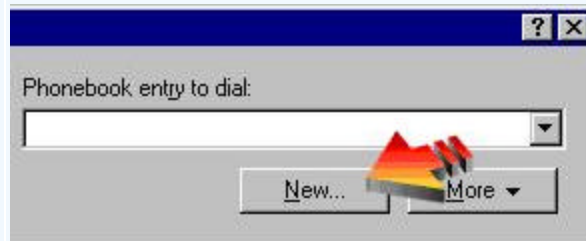
Step 2

Double click on the **Dial-Up Networking** folder



Step 3

Click **New** to add a **Phone Book** entry

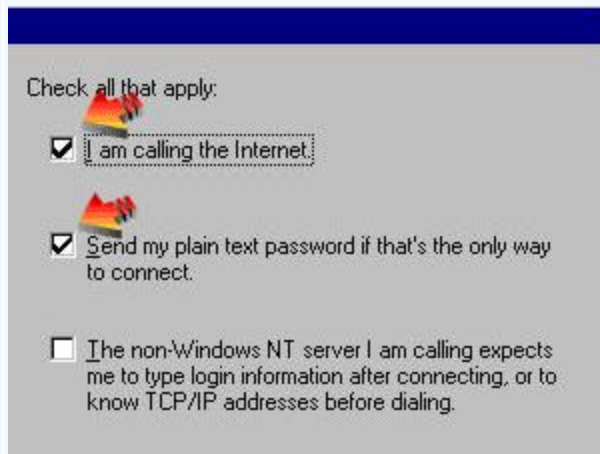


Step 4

Type 2easytel and click **Next**

Step 5

Select the two options: 'I am calling the Internet' and 'Send my plain text password if that's the only way to connect'. Click **Next**



Step 6

Type the Nationwide MEGAPOP number **0198308007**

Step 7

Leave the 'Use Telephony Dialing Properties' option unticked and click **Next**

Step 8

Choose PPP as the **Login Type** and click **Next**

Step 9

Choose **None** and click **Next**

Step 10

Leave the **IP Settings** on automatic and enter the **DNS** settings:

- **Primary DNS:** 202.52.32.2
- **Secondary DNS:** 202.52.32.6

Step 11

Leave the **WINS Server** settings blank

Step 12

Click **Finish**

